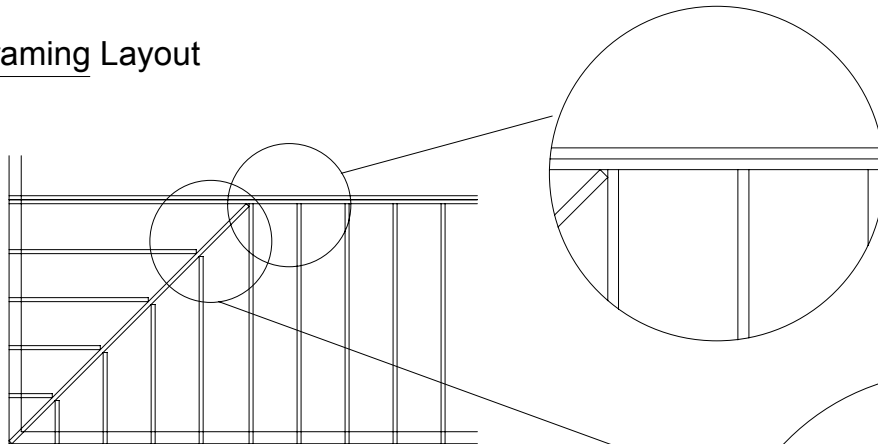
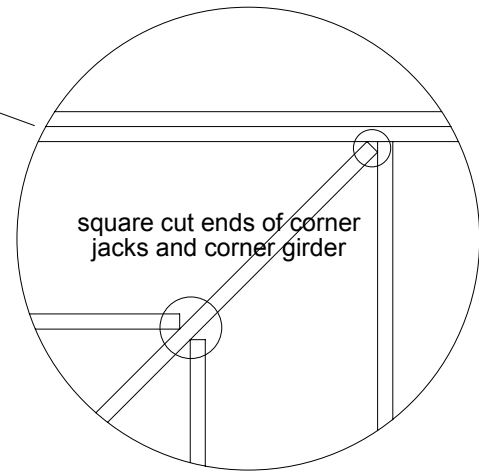


STEP 1 - Framing Layout

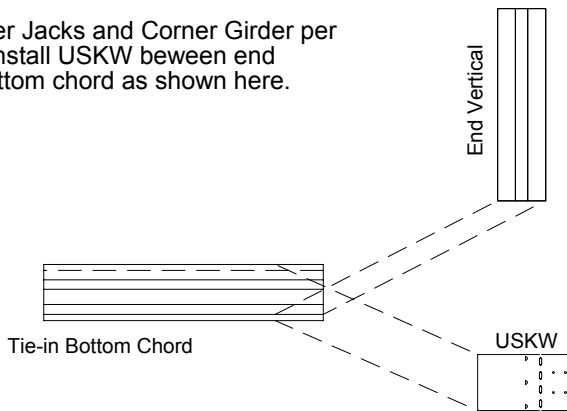


- ① In Aegis Layout, Enter Hip End using available tools
- ② Verify truss ends are square cut.
- ③ In Aegis Design, select the USKW tool and apply to ends of the jack and corner girder trusses. Select 7/8" setback for the common Jack trusses. This tool will apply and check the design of the USKW connector.

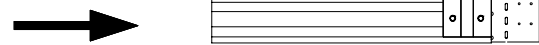


STEP 2 - Jack and Corner Jack Truss Fabrication

Build the Corner Jacks and Corner Girder per engineering. Install USKW between end vertical and bottom chord as shown here.

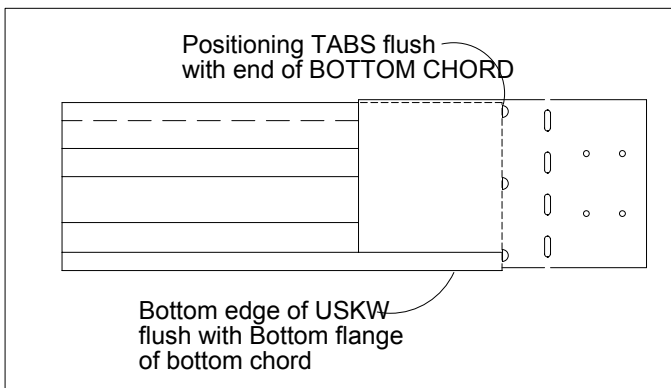
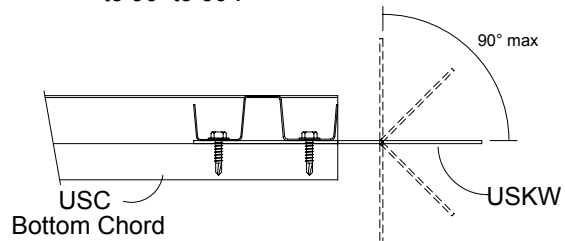


- ② Install USW end vertical overlaying USKW. Attach with #10 SDS as specified on truss design



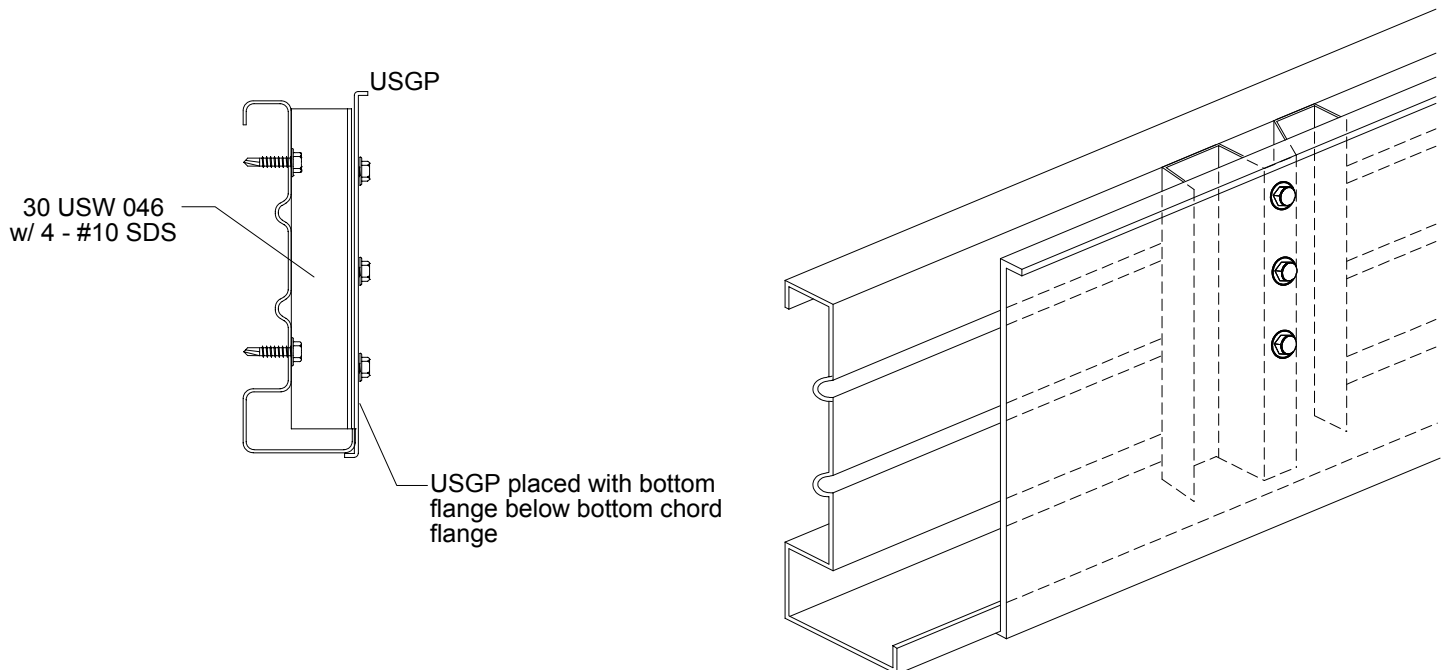
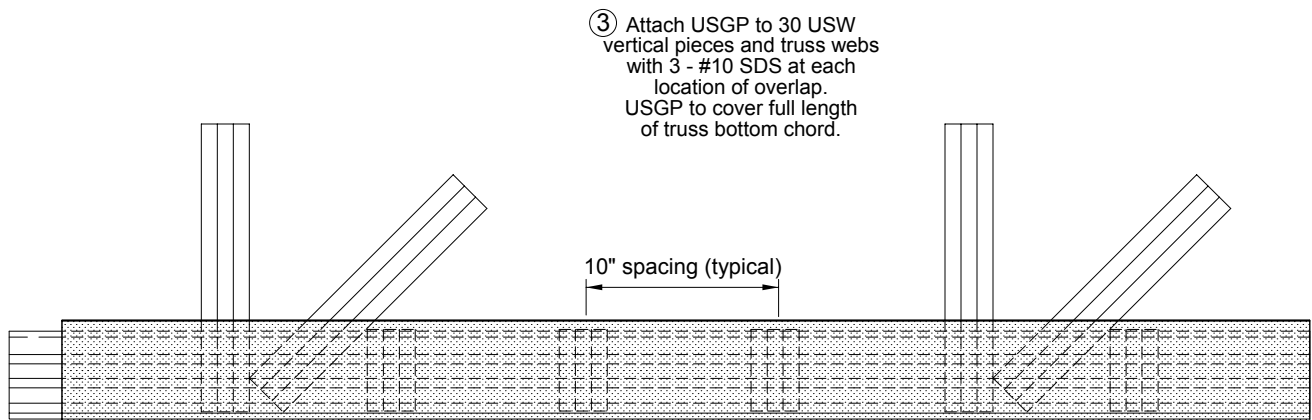
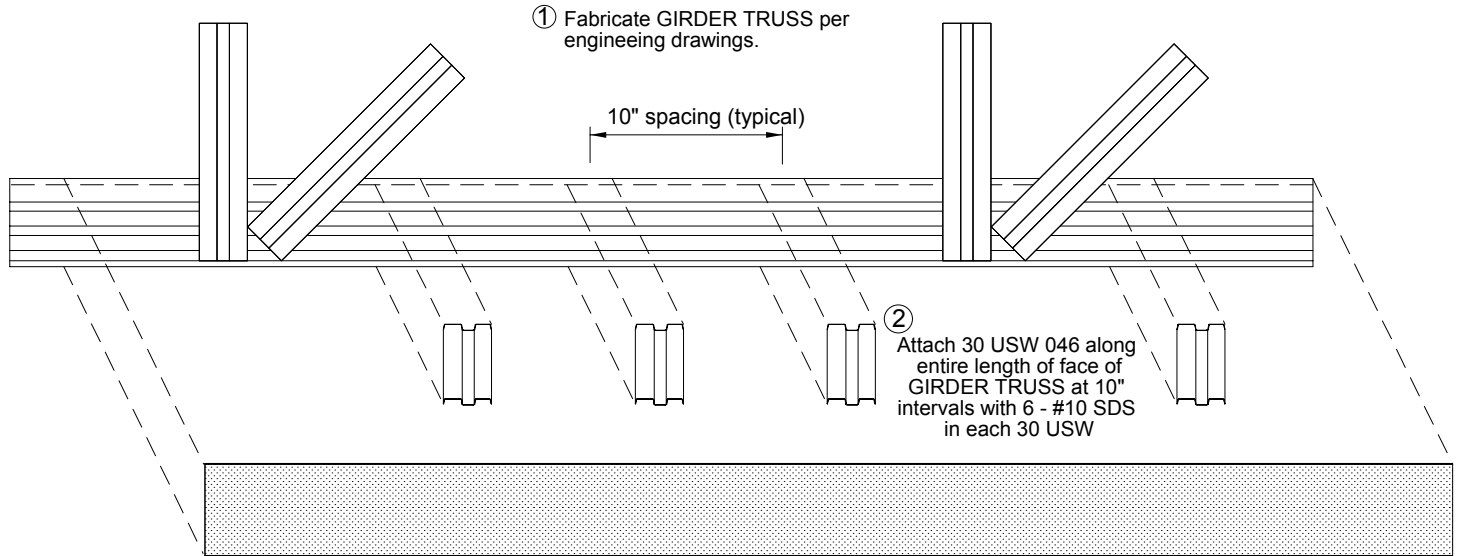
- ① Lay USKW on Bottom Chord aligning positioning tabs with end of bottom chord. Hold bottom edge of USKW flush with bottom flange. This will position 35USKW in the exact location for use as 90° or 45° connections.

NOTE: USKW can not be used in the 45° orientation with USD products. Because of geometry of the USD product, the range of angles is limited to 90° to 60°.

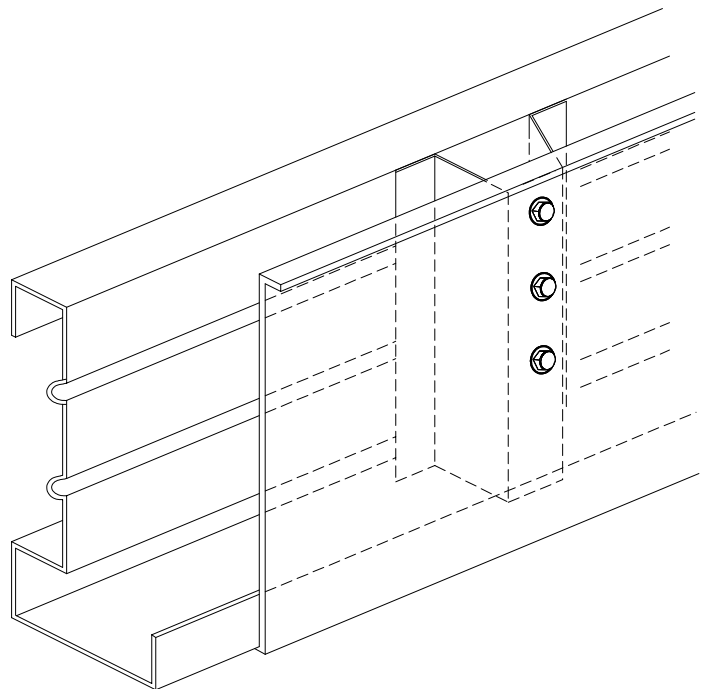
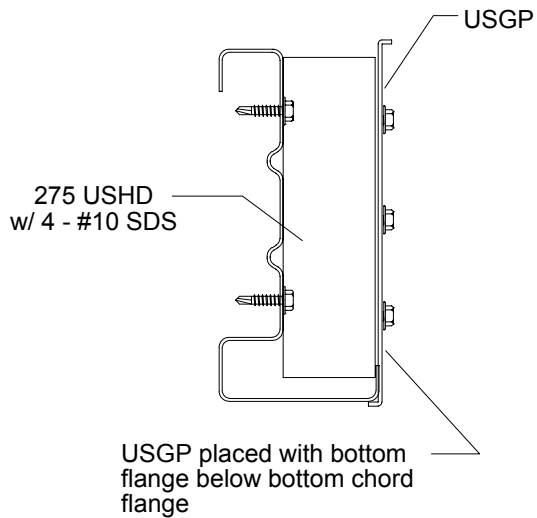
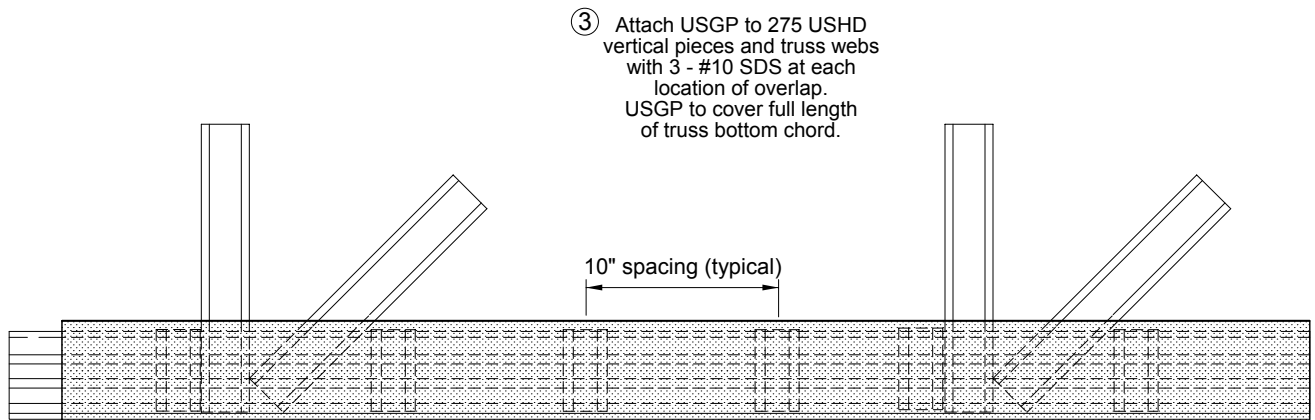
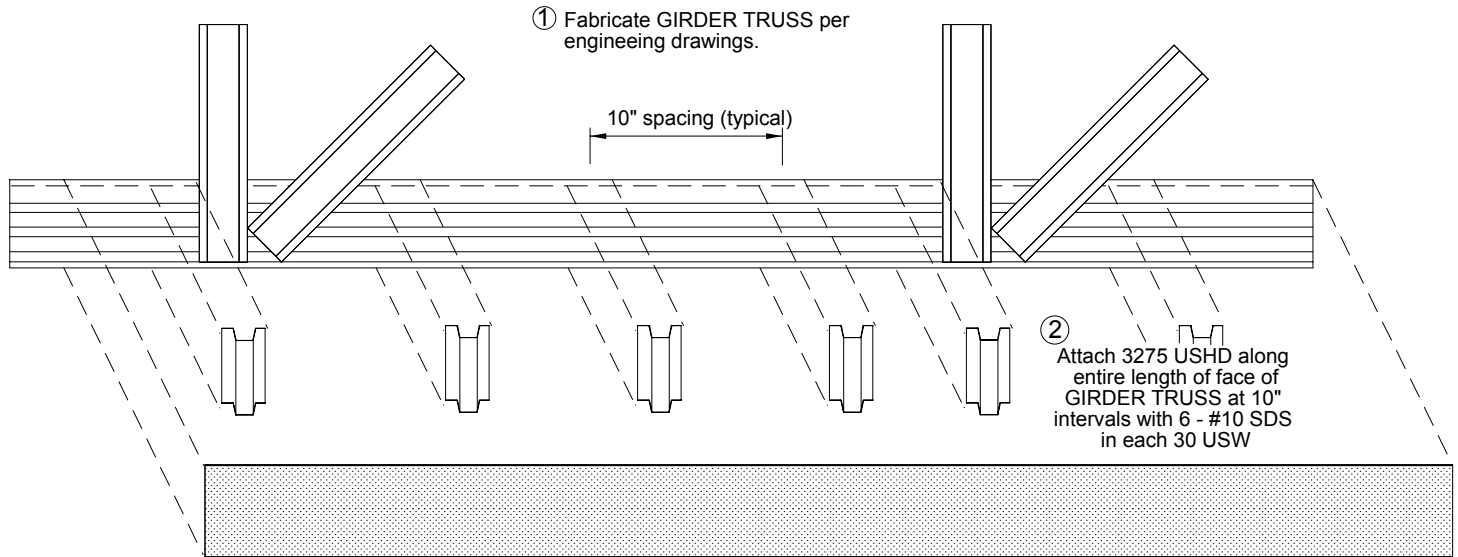


** See Aegis US2US Connection Detail Series for Maximum Tie-In Truss Reactions

STEP 3 - Girder Truss Fabrication for USC trusses

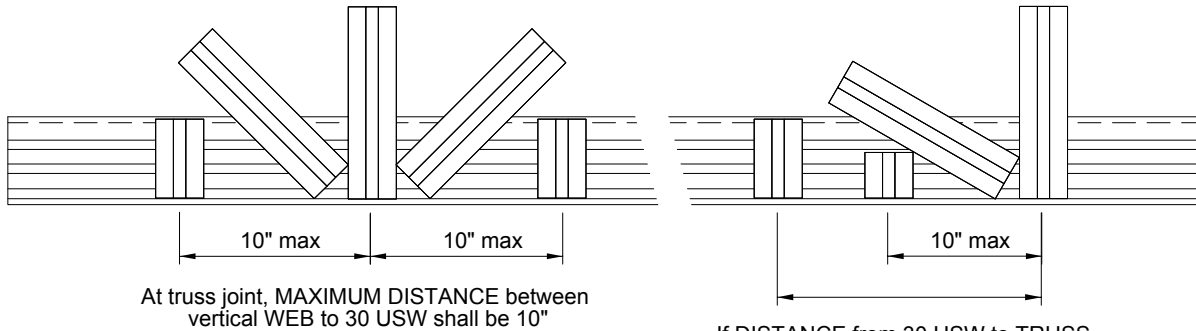


STEP 3 - Girder Truss Fabrication for USD trusses



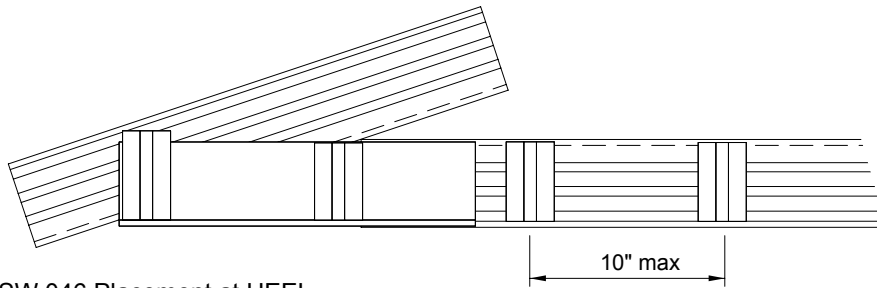
USC trusses

Distance from any 30 USW to vertical web at truss joint shall be limited to 10"

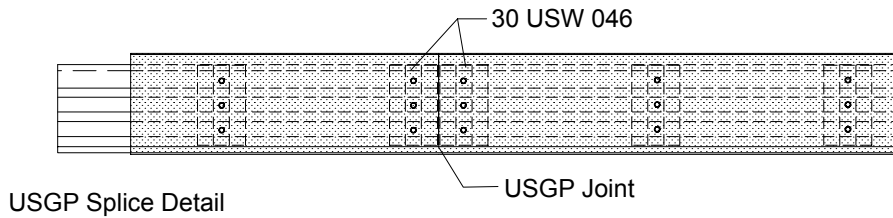


At truss joint, MAXIMUM DISTANCE between vertical WEB to 30 USW shall be 10"

If DISTANCE from 30 USW to TRUSS VERTICAL is greater than 10", add 30 USW.
If DIAGONAL WEB is present, use shorter 30 USW
Attach to DIAGONAL WEB with 3 - #10 SDS



30 USW 046 Placement at HEEL



USGP Splice Detail

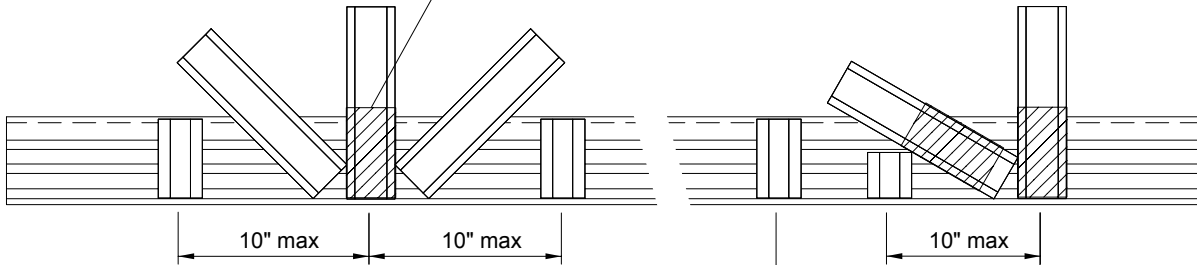
At USGP JOINT, install 2 - 30 USW 046
Butt USGP over double 30 USW
Attach each USGP to 30 USW w/ 3 - #10 SDS

Avoid locating USGP JOINT at truss panel point
MINIMUM LENGTH of USGP shall be 24"

USD trusses

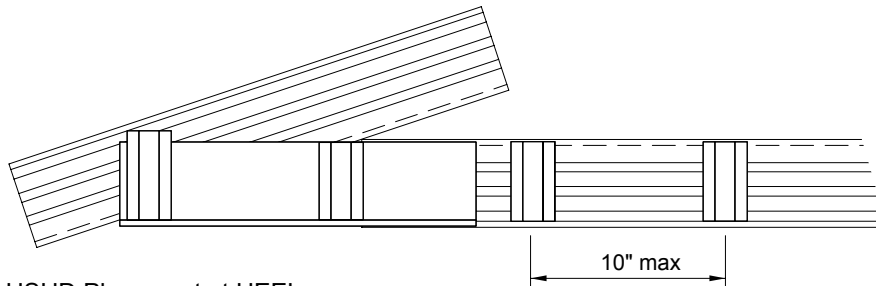
Distance from any 275 USHD to vertical web at truss joint shall be limited to 10"

Cap WEB with TRACK. Minimum 046 (nominal 18ga)
Attach to WEB with 6 - #10 SDS

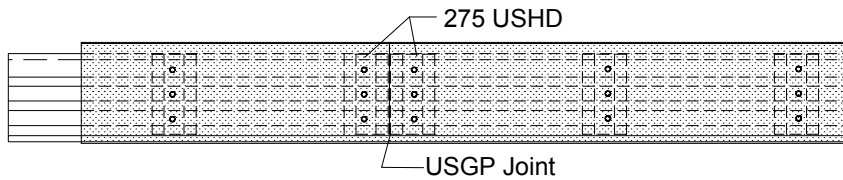


At truss joint, MAXIMUM DISTANCE between vertical WEB to 275 USHD shall be 10"

If DISTANCE from 275 USHD to TRUSS VERTICAL is greater than 10" and DIAGONAL WEB is present, use shorter 275 USHD Cap DIAGONAL WEB. Attach to DIAGONAL WEB with 3 - #10 SDS



275 USHD Placement at HEEL



USGP Splice Detail

At USGP JOINT, install 2 - 275 USHD
Butt USGP over double 275 USHD
Attach each USGP to 275 USHD w/ 3 - #10 SDS

Avoid locating USGP JOINT at truss panel point
MINIMUM LENGTH of USGP shall be 24"