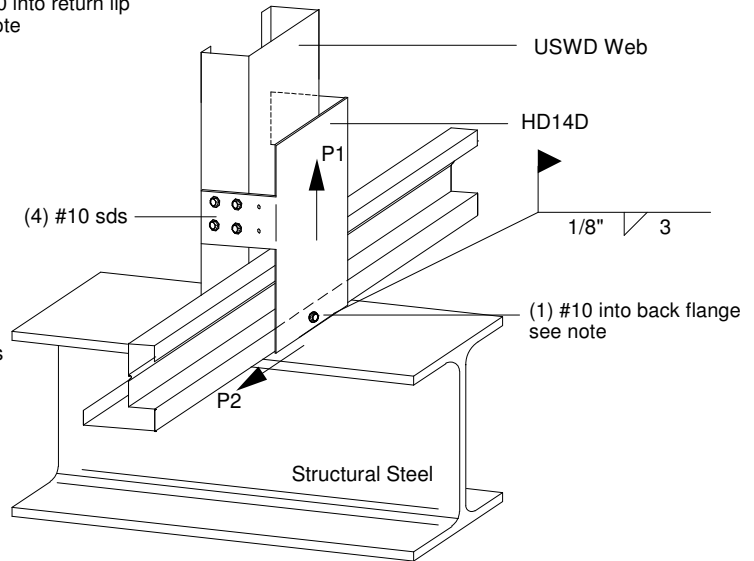
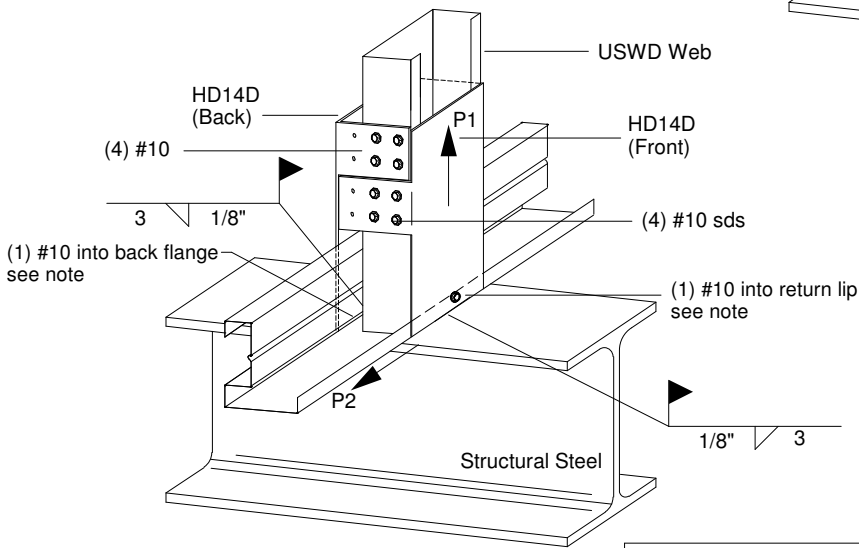


MAXIMUM CAPACITY (LBS)		
	WEB	UPLIFT P1
1224HD14D	035	1945
	046	3350
	057	3490
1226HD14D	035	1945
	046	3350
	057	3820



Horizontal Reaction, P2 = 155 lbs
Horizontal Reaction increased to 395 lbs
w/ (1) #10 sds installed into return lip



Horizontal Reaction, P2 = 310 lbs
Horizontal Reaction increased to 795 lbs
w/ (1) #10 sds installed into return lip
and back flange

MAXIMUM CAPACITY (LBS)		
	WEB	UPLIFT P1
1224HD14D	035	3880
	046	6700
	057	6980
1226HD14D	035	3880
	046	6700
	057	7640

- 1) Min. screw spacing & edge distance = 9/16"
- 2) Min. bearing width = 3". Min steel thick = 0.150"
- 3) Welders and welding procedures shall be qualified as specified in AWS D1.3
- 4) Min. filler metal strength, Fxx = 70 ksi
- 5) When this connection detail is applied to both plies of a 2-ply truss, the capacities double
- 6) This detail does not indicate or imply that the depicted bearing is structurally adequate for the loads shown. Design of bearing is required



METAL FRAMING, a division of MITE®
www.AEGISMETALFRAMING.COM
14515 N. Outer 40 Drive Suite 110
Chesterfield, MO 63017
Phone:866/902-3447 Fax:314/434-5234

USD TRUSS TO BEARING CONNECTION 1224/1226HD14D - STRUCTURAL STEEL

DETAIL NO.

D-SS-3

CATEGORY

STANDARD DETAILS

DATE

3/3/09