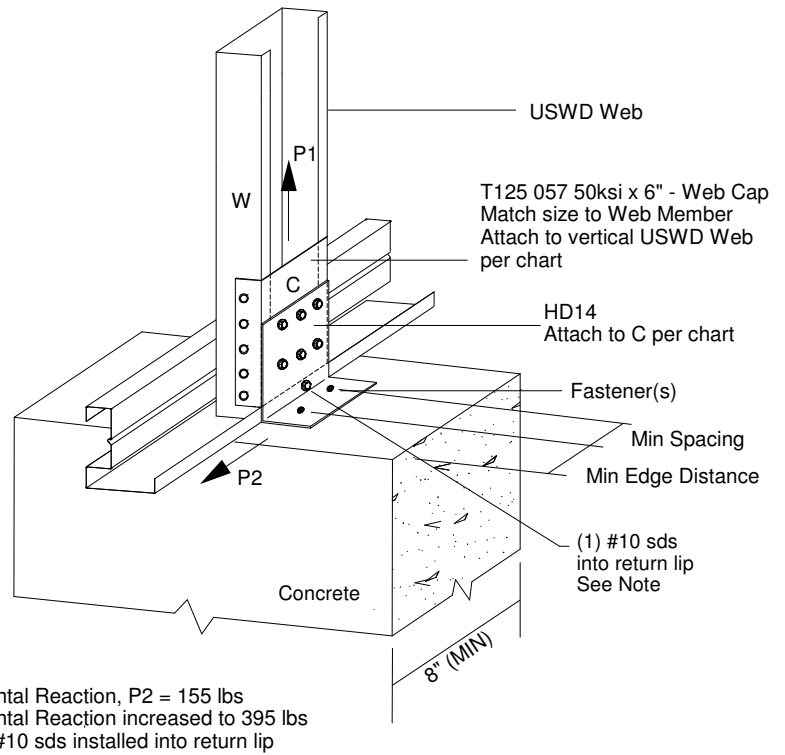
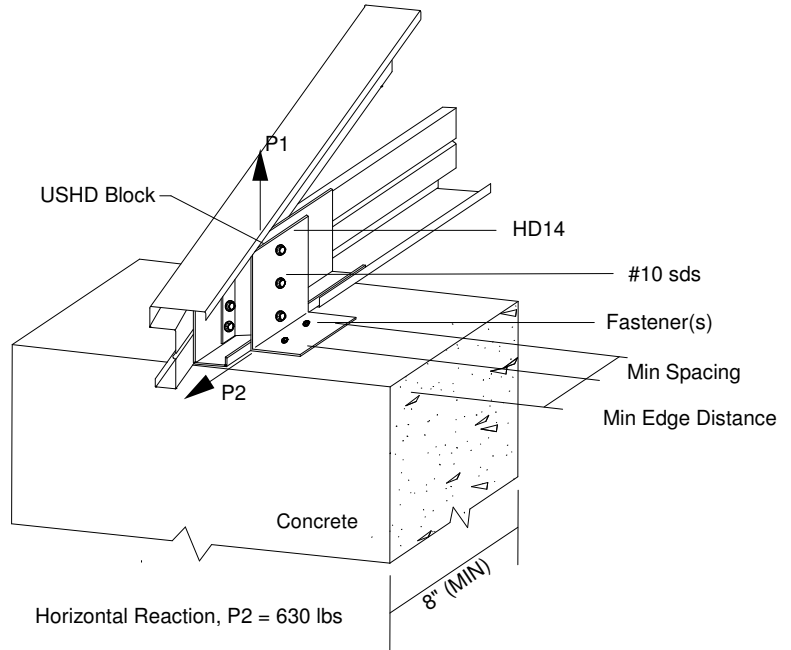


MAXIMUM CAPACITY (LBS)									
FASTENER	#	CONC (PSI)	EMBED (IN)	EDGE DIST. (IN)	SPAC (IN)	#10 SDS HD-C	#10 SDS C-W	UPLIFT P1	
423HD14	Kwik Bolt 3 3/8" Dia.	1	3000	1.625	4	NA	2	4	910
			1200	2.5	4	NA	3	6	1200
	3/8" HIT HY 150 MAX	1	4000	1.625	4	NA	3	6	1095
			1200	2.5	4	NA	3	6	1200
426HD14	Kwik Bolt 3 3/8" Dia.	2	3000	1.625	3	3.25	4	8	1675
			2090	2.5	3	4	5	10	2090
		4000	2015	1.625	3	3.25	5	10	2015
			2200	2.5	3	3.25	5	10	2200
	3/8" HIT HY 150 MAX	2	1450	1.75	3	3.375	4	6	1450
			2400	3.375	3	3.375	5	10	2400
		4000	2310	1.75	3	3.375	5	10	2310
			2400	3.375	3	3.375	5	10	2400



Horizontal Reaction, P2 = 155 lbs
Horizontal Reaction increased to 395 lbs
w/ (1) #10 sds installed into return lip

MAXIMUM CAPACITY (LBS)									
FASTENER	#	CONC (PSI)	EMBED (IN)	EDGE DIST. (IN)	SPAC (IN)	#10 SDS	UPLIFT P1		
423HD14	Kwik Bolt 3 3/8" Dia.	1	3000	1.625	4	NA	2	910	
			1200	2.5	4	NA	3	1200	
	3/8" HIT HY 150 MAX	1	4000	1.625	4	NA	3	1095	
			1200	2.5	4	NA	3	1200	
426HD14	Kwik Bolt 3 3/8" Dia.	2	1675	1.625	3	3.25	4	1675	
			2090	2.5	3	4	5	10	2090
		4000	2015	1.625	3	3.25	5	10	2015
			2200	2.5	3	3.25	5	10	2200
	3/8" HIT HY 150 MAX	2	1450	1.75	3	3.375	4	1450	
			2400	3.375	3	3.375	5	10	2400
		4000	2310	1.75	3	3.375	5	10	2310
			2400	3.375	3	3.375	5	10	2400



Horizontal Reaction, P2 = 630 lbs

- 1) Min. screw spacing & edge distance = 9/16".
- 2) Refer to the Hilti Product Technical Guide for installation requirements and application limits.
- 3) Equivalent fasteners may be substituted.
- 4) Place fasteners in line w/ holes in the HD14.
- 5) When this connection detail is applied to both plies of a 2-ply truss, the capacities double.
- 6) This detail does not indicate or imply that the depicted bearing is structurally adequate for the loads shown. Design of bearing is req'd.
- 7) Max. Reactions shown are non-concurrent.

AEGIS
METAL FRAMING, a division of MITEI®
www.AEGISMETALFRAMING.COM
14515 N. Outer 40 Drive Suite 110
Chesterfield, MO 63017
Phone:866/902-3447 Fax:314/434-5234

USD TRUSS TO BEARING CONNECTION
423/426HD14 - CONCRETE

DETAIL NO.

D-CON-1

CATEGORY

STANDARD DETAILS

DATE

3/3/09