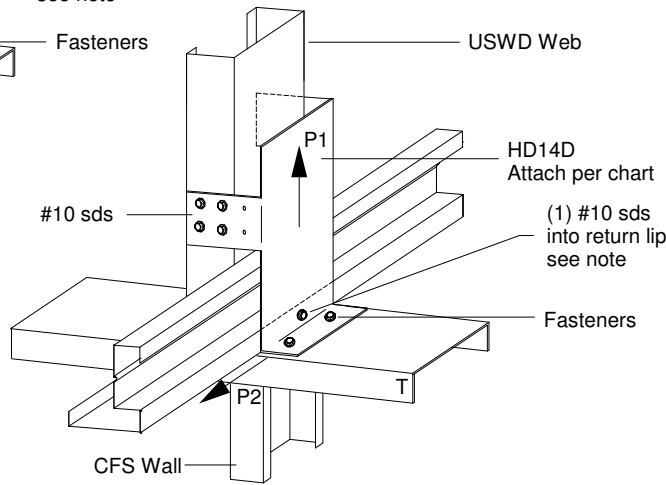


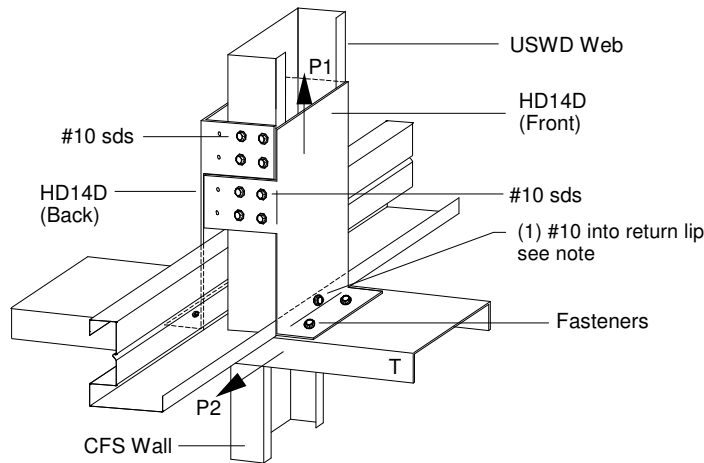
Horizontal Reaction, P2 = 155 lbs
Horizontal Reaction increased to 395 lbs
w/ (1) #10 sds installed into return lip



MAXIMUM CAPACITY (LBS)

TRACK	#10 TAB	#10 HD-T	UPLIFT P1
033	2	2	400
	2	3	600
	2	4	800
043	2	2	660
	4	3	1000
054	4	2	940
	4	3	1420
	4	4	1880
068	4	2	1290
	4	3	1930
033	2	4	800
	4	6	1200
	4	8	1600
043	4	4	1320
	4	6	2000
	4	8	2640
054	4	4	1880
	4	6	2840
	4	8	3760
068	4	4	2580
	4	6	3860
	4	8	5260

MAXIMUM CAPACITY (LBS)			
TRACK	#10 TAB	#10 HD-T	UPLIFT P1
033	2	2	200
	2	3	300
	2	4	400
043	2	2	330
	2	3	500
054	2	2	470
	2	3	710
	4	4	940
068	3	2	645
	4	3	965
	4	4	1200
033	2	4	400
	2	6	600
	4	8	800
043	2	4	660
	4	6	1000
	4	8	1320
054	4	4	940
	4	6	1420
	4	8	1880
068	4	4	1290
	4	6	1930
	4	8	2400



Horizontal Reaction, P2 = 213 lbs
Horizontal Reaction increased to 690 lbs
w/ (1) #10 sds installed into each return lip

- 1) Min. screw spacing & edge distance = 9/16".
- 2) Min. bearing width for 1226HD14D = 6".
- 3) Place screws in line w/ holes in the HD14D.
- 4) When this connection detail is applied to both plies of a 2-ply truss, the capacities double.
- 5) This detail does not indicate or imply that the depicted bearing is structurally adequate for the loads shown. Design of bearing is req'd.
- 6) Max. Reactions shown are non-concurrent.



METAL FRAMING a division of MITEI®
www.AEGISMETALFRAMING.COM
14515 N. Outer 40 Drive Suite 110
Chesterfield, MO 63017
Phone:866/902-3447 Fax:314/434-5234

USD TRUSS TO BEARING CONNECTION
1224/1226HD14D - CFS WALL

DETAIL NO.

D-CFS-2

CATEGORY

STANDARD DETAILS

DATE

3/3/09